

**THE CITY OF EDINBURGH COUNCIL**

**MEETING 11**

**15 MARCH 2018**

**QUESTIONS AND ANSWERS**

## Item no 5.1

### QUESTION NO 1

**By Councillor Lang for answer by the Leader of the Council at a meeting of the Council on 15 March 2018**

On 24 August 2017, the Council agreed a motion calling for a report to the Corporate Policy and Strategy Committee within two cycles on what further action could be taken to address the underlying issues which lead to crime and antisocial behaviour as part of a longer-term strategy on the issue of motorbike crime

- |                 |   |
|-----------------|---|
| <b>Question</b> | <b>(1)</b> Why did a report not return to the Corporate Policy and Strategy Committee within two cycles as agreed?  |
| <b>Answer</b>   | <b>(1)</b> Unfortunately, the motion calling for a report regarding a longer-term strategy on the issue of motorbike crime, was not passed to the service area, Safer and Stronger Communities, where the current work is being progressed. |
| <b>Question</b> | <b>(2)</b> When is the report now expected to come to the Corporate Policy and Strategy Committee?  |
| <b>Answer</b>   | <b>(2)</b> The report will be submitted to the Corporate Policy and Strategy Committee on the 15 <sup>th</sup> May 2018.  |

## Item no 5.2

### QUESTION NO 2

**By Councillor Lang for answer by the Leader of the Council at a meeting of the Council on 15 March 2018**

On 23 November 2017, the Council approved a motion to agree that the Leader of the Council write to (i) the Cabinet Secretary for Justice to request that the Scottish Government and its partner agencies investigate and address the antisocial use of unlicensed fireworks, and (ii) the Secretary of State for Business, Innovation & Skills to seek a review of the rules governing the sale of fireworks.

**Question** (1) On what date(s) did the Council Leader send these letters?

**Answer** (1) Both the Community Justice and Trading Standards Teams are working together to finalise the correspondence for issue. Given the relevance of both antisocial behaviour and trading standards legislation, it is important that the technical content of the correspondence is both clear and correct. The finalised correspondence is expected to be issued within the next 2 weeks.

**Question** (2) Will he publish both letters?

**Answer** (2) Yes, once the letters have been finalised and issued they will be published.

**Question** (3) What, if any, responses have been received from Ministers?

**Answer** (3) Once a response has been received, then further details will be provided.

## Item no 5.3

### QUESTION NO 3

**By Councillor Lang for answer by the Convener of the Finance and Resources Committee at a meeting of the Council on 15 March 2018**

- Question** (1) What is the current status of the janitorial review?
- Answer** (1) The Janitorial review has concluded employee consultation and direct engagement with the schools' network. 20 of the 26 new supervisor positions have been filled and are in post. A recruitment campaign is underway to fill the vacant posts within the new model. Further discussions are currently taking place with Communities and Families senior management, to finalise the model.
- Question** (2) When does he expect the outcomes of the review and the revised levels of janitorial cover to come into force?
- Answer** (2) When the model is finalised, it is anticipated that a mobilisation period of at least 3 months will be required.
- Question** (3) What intimations has he or officials received from trade unions with respect to possible industrial action as a result of the janitorial review?
- Answer** (3) Unison held a consultative ballot on the 22<sup>nd</sup> of December 2017. The union has advised that the vote result was 95% of those who voted were in favour of industrial action, should their concerns not be addressed in the final model.
- Unison are awaiting sight of the agreed final model before they will advise their next steps.
- Question** (4) When will information relating to the charges for out of hours janitorial cover be provided to community centre management committees and why has such information not been provided so far?

**Answer**

- (4)** It is expected that the model will be finalised the week commencing 12 March and will initially be communicated to employees, then to management committees thereafter. The project team will communicate directly with management committees the allocated hours which have been finally agreed for their building. The schedule of rates will also be advised at that time.

## Item no 5.4

### QUESTION NO 4

**By Councillor Rust for answer by the Convener of the Education, Children and Families Committee at a meeting of the Council on 15 March 2018**

**Question** (1) Was a fixtures & fittings inspection carried out as part of the safety inspections following the wall collapse at Oxgangs Primary School in 2016 and children re-entering the school following repairs?

**Answer** (1) Yes – Amey confirmed they carried out all Statutory Maintenance Requirements prior to pupils and staff returning to Oxgangs Primary School in 2016.

In addition, an Amey Health and Safety practitioner carried out a visual inspection of the school, on a room by room basis and did not identify any issues which would give concern from a Health and Safety perspective.

**Question** (2) If not, what are the reasons as to why that would not have been done?

**Answer** (2) Not applicable

**Question** (3) Amey provided a summary report of the February 2018 ceiling tile incident, which allegedly contain an inaccuracy. What was inaccurate and has that report now been corrected and made publicly available?

**Answer** (3) The inaccuracy referred to a pupil suffering a minor injury, which was not the case. The report has been rectified and can be made available on request.

**Question** (4) Was the cable suspending the ceiling missing from when the building was constructed, or was it as a result of later maintenance?

**Answer** (4) The investigation is inconclusive on this matter.

**Question** (5) Is the Amey report considered by the Council to be the full and final statement on the latest incident?

**Answer**

- (5)** Yes. All ceilings in the school have now been inspected by the PPP provider accompanied by Council officers.

## Item no 5.5

### QUESTION NO 5

**By Councillor Rust for answer by the Convener of the Transport and Environment Committee at a meeting of the Council on 15 March 2018**

**Question** (1) When is it intended that the minority Administration Budget proposal for the introduction of a charge for garden waste collection will commence?

**Answer** (1) July 2018.

**Question** (2) Is the charge per brown bin or per household?

**Answer** (2) The cost is per bin.

**Question** (3) How many brown garden waste bins are currently serviced in Edinburgh per ward and in terms of Council business planning how many of those households are predicted to opt-in to the new charged service?



**Answer** (3) There are approximately 124,000 households eligible for garden waste collection. Table 1 below shows the breakdown of these by ward. In calculating the income potential It was predicted that 46% of eligible households would opt-in to the collection service when charges are introduced.

01-Almond	12,203
02-Pentland Hills	9,271
03-Drum Brae/Gyle	8,266
04-Forth	7,833
05-Inverleith	7,679
06-Corstorphine/Murrayfield	8,339
07-Sighthill/Gorgie	6,939
08-Colinton/Fairmilehead	7,970
09-Fountainbridge/Craiglockhart	5,399
10-Meadows/Morningside	6,222
11-City Centre	2,702
12-Leith Walk	3,604
13-Leith	2,793
14-Craigentinny/Duddingston	7,319
15-Southside/Newington	5,761
16-Liberton/Gilmerton	12,232
17-Portobello/Craigmillar	9,272
Grand Total	123,804

**Question** (4) What steps will be taken to retrieve brown bins from those households which have chosen not to opt into the new scheme?

**Answer** (4) After implementation, the service will develop a phased programme of removing bins from properties which are not registered for the charging service. Details of the roll-out will be sent to residents in due course.

**Question** (5) What research has been undertaken in terms of potential increase in fly tipping or mis-use of other waste streams once the opt-in charging scheme comes into effect?

**Answer** (5) A number of local authorities in Scotland and England have implemented charging for services in recent years and we consulted them on the impacts of implementation in developing the garden waste charging proposal. From our research, there was no significant impact on fly-tipping and/or mis-use of other waste streams following implementation. We will, however, continue to monitor fly-tipping levels following implementation of the scheme.

- Question** (6) Does the new opt-in charging scheme
- (a) affect the existing agreement with Tiphereth which has an agreement with CEC to collect garden refuse in parts of Colinton and
  - (b) affect future discussions regarding extension/re-negotiation of that agreement?
- Answer** (6) A meeting with Tiphereth is planned to discuss any possible impacts on their service in Colinton.
- Question** (7) How many households are anticipated to be exempt from the opt-in charge and how will the exemption be applied?
- Answer** (7) Based on the number of households that qualify for the Council Tax Reduction Scheme it is anticipated that 13% will exempt from the charge. These properties will still need to register if they wish to receive the service but will not be charged.
- Question** (8) What happens when a household which has opted-in to the garden waste collection service moves property during the year?
- Answer** (8) If a customer who has opted-in to the service moves house during the year and they wish to retain the service at their new property this can be accommodated. They will be required to inform the service so the routes can be updated and take the brown bin with them when they move.
- Question** (9) Can a household which has opted-in, opt out during the year?
- Answer** (9) No, the opportunity to opt-in will only be available once per year.
- Question** (10) Are recycling points for garden waste prepared for increased demand?
- Answer** (10) Yes, the Council's Household Waste Recycling Centres are being prepared.
- Question** (11) If on the basis of a bin sticker system, how will this operate where a sticker is removed or comes off?

**Answer** (11) Crews will hold data on all properties which are registered for the scheme. When a customer requests a replacement sticker, this will be cross-checked with our records and a replacement sticker issued where appropriate.

We will investigate any instances where it is possible that stickers have been transferred to other properties.

**Question** (12) Where there are tenemental properties or shared garden courtyards how will the charging be administered and can neighbours share bins?

**Answer** (12) The service will be offered to all households who can currently use the service. If residents wish to share a bin, we will expect that they agree on one resident acting in the lead, booking and paying for the service.

**Question** (13) What is

- (a) the resource requirement to implement and administer this new service, including staffing, spend on communications, issuance of stickers etc and retrieval of bins for those who have not opted in; and
- (b) the anticipated income yield from the charge?

**Answer** (13) It is anticipated that the service will yield income of £1.4 million per annum. The cost of running the service is estimated at £0.1 million.

**Question** (14) What evidence has been drawn from other local authorities which operate opt-in charge garden waste collection?

**Answer** (14) As described above (Question 5) we have reviewed the experiences of other Local Authorities who have introduced a garden waste charge and will use this knowledge to develop the paid service in Edinburgh.

**Question** (15) Will there be refunds offered for missed garden waste collections?

**Answer** (15) Refunds will not be offered for missed garden waste collections. Where the collection has been missed due to service failure, we will endeavour to collect the bin at a later time/day. Where contamination occurs we will mark the bin accordingly and will expect the resident to make arrangements to rectify this. We will return on the next scheduled collection day.

**Question** (16) Where garden waste bins are lost/stolen, who meets the cost for a new bin?

**Answer** (16) The Council will meet the cost of the replacement bin.

**Question** (17) By what date will it be possible for residents to request any of the services (that are to be provided above) on-line through the Councils website?

**Answer** (17) Households will be able to register for the new service online by the end of May 2018.

## Item no 5.6

### QUESTION NO 6

**By Councillor Brown for answer by the Convener of the Transport and Environment Committee at a meeting of the Council on 15 March 2018**

Late evening on 13th October last year a lamppost and bus shelter was taken out by a joyrider on Drum Brae Drive and was reported on social media to @edinhelp the following morning whilst I attended my monthly surgery at the DrumBrae Library Hub.

I was advised on the very same Twitter account on 13th December when following this up, "Hi Mark. Your enquiry about the bus shelter has been logged under reference 1001637. Our Street Lighting Team is already aware of the damaged light and will repair it as soon as possible."

A further email to Street Lighting on 14<sup>th</sup> February has received no response.

Thankfully the bus shelter has now been fixed.

Just like the Constituents waiting on a bus there during the winter months, their local Councillor raising the matter has been left in the dark.

### Question

Can the Convener advise whether no action in some 5 months is deemed an acceptable standard for the Council and confirm when this street light will be made good?

### Answer

The damaged street light in question (DFC19) was reported on 13 October and was made safe early the following morning.

A request for a new column was made on 18 October and has been received. I recognise that there have been issues in the speed of repair of street lights throughout the winter, partly due to difficulties in recruiting and retaining approved Electricians. However, the Roads Improvement Plan has now been updated to include action to improve street lighting repairs and increased resources have been secured

to ensure the outstanding repair backlog is reduced over the next few months.

The new lighting column was installed on 8 March 2018.

## Item no 5.7

### QUESTION NO 7

**By Councillor Jim Campbell for answer by the Leader of the Council at a meeting of the Council on 15 March 2018**

Looks forward to the business case for the proposed replacement of the Ross Theatre being reported to Culture & Communities and Finance & Resources Committees later this month, and asks

**Note for Members:** it is proposed that a report will be presented to Culture and Communities Committee on 20 March 2018 on the proposals for West Princes Street Gardens and the Ross Bandstand. Member briefings are planned following this, with a final report to be prepared for Council to consider.

**Question** (1) What discussions has the Council Leader had with the Conveners or Vice Conveners of those Committees or the Housing & Economy Committee, given the international profile of the design competition won by a team lead by the WHY practice and the potential this project offers this city?

**Answer** (1) As the report to the Culture and Communities Committee will now be referred to the meeting of the full Council on 3 May, appropriate briefings to all political groups and Convenors/Vice Convenors will be undertaken

**Question** (2) Has any consideration been given to the wisdom of reaching an agreement with the Ross Development Trust that was limited to “fundraising and building” a replacement venue, which has led to an unfortunate hiatus in the project while issues of maintenance are resolved, denting this Councils ambition to create a transformed city centre fit to power Scotland’s economy and reflecting Edinburgh’s status as a capital city?

**Answer**

- (2)** The development agreement between the Council and the Ross Development Trust was signed in December 2016. Since then significant progress has been made on the refurbishment of the cottage and fountain in addition to the design competition. This is an extremely important project for the city and it has been recognised that there is a need to protect the legacy of any investment made. The report being prepared for Culture and Communities Committee will be referred to full Council for approval and will outline proposals to supplement the existing agreement to achieve the desired outcomes on the project.



## Item no 5.8

### QUESTION NO 8

**By Councillor Jim Campbell for answer by the Convener of the Education, Children and Families Committee at a meeting of the Council on 15 March 2018**

- Question** (1) What is the maximum operational capacity of Trinity Academy, taking into account the Council's own finding in 2015 that Core Facilities of the school did not meet the capacity requirements at that time?
- Answer** (1) A report to full Council on 20 August 2015 on [Future Investment in the School Estate – Wave 4](#) highlighted in paragraph 3.7(iii) and appendix 2 that the core facilities at Trinity Academy do not meet the requirements for the school's notional capacity of 950. While it is possible for the roll to rise the plan is that Trinity - as part of the Wave 4 schools programme - will be rebuilt before the roll rises substantially. In the meantime there is no legislation which would stop the school roll being increased to the school's capacity of 950.
- Question** (2) What work has the Council undertaken since 2015 to ensure the Core Facilities at Trinity Academy match the City of Edinburgh Council's own stated requirements?
- Answer** (2) Since 2015, £1.4m has been spent on property related issues at Trinity Academy. In addition, a feasibility study has been completed to demonstrate that the indoor sports and swimming facilities for a 1200 school could be developed at the Bangholm recreation site which is currently used by the school for outdoor sporting activities. The study also showed the main site could then be redeveloped with a phased approach to provide the remaining core facilities for a modern 1200 capacity school.

## Item no 5.9

### QUESTION NO 9

**By Councillor Bruce for answer by the Convener of the Education, Children and Families Committee at a meeting of the Council on 15 March 2018**

Having attended the first three SW Edinburgh School Catchment review workshops at Currie Primary, Clovenstone Primary and Balerno High School:

- Question** (1) Can the Convener please explain why different proposals appear to have been put forward at each of these workshops?
- Answer** (1) The only proposal put forward by the Council is what has become known as “the published proposal” and is available of the website [www.edinburgh.gov.uk/schoolsreview](http://www.edinburgh.gov.uk/schoolsreview). Any other options discussed at workshops have been ideas and suggestions which have been raised by school communities during the informal consultation. Where appropriate the ideas and suggestions have been raised at following workshops in order that as many views as possible can be expressed and recorded during the informal consultation period.
- Question** (2) Can the Convener please clarify how offering different communities different proposed solutions to the same problem, in the same consultation, will help his committee command widespread public support?
- Answer** (2) As stated in the previous answer there was only one option published as part of the informal consultation and any options which have been discussed during the engagement events are a result of one of the fundamental objectives of the informal consultation being to determine what other ideas and suggestions would be forthcoming from the school communities involved.

## Item no 5.10

### QUESTION NO 10

**By Councillor Laidlaw for answer by the Convener of the Education, Children and Families Committee at a meeting of the Council on 15 March 2018**

#### Question

Asks the Convener to provide a list of all CEC schools where a need has been identified to build new capacity, and this is being actively being addressed.

In each case, please list:

- the date the new capacity is required
- if funds have been approved and allocated
- What, if any, permissions are still required
- The extent to which play and/or sports grounds or indoor facilities will be compromised by the extensions required?

#### Answer

The current schools where it has been identified that new capacity is required and where this is actively being pursued (i.e. there is a capital budget established to deliver the project and implementation is progressing) are shown on the table below.

There is no current funding for the revenue implications of the projects and an estimate of this additional cost has been added to the table.

School	Date Capacity Required	Additional Unfunded Revenue Cost	Permission Still required	Impact on Playground
Queensferry HS	2020	£759k (net of current running costs)	Building Warrants	None in long term.
Boroughmuir HS additional places	2019-20	£141k	Planning and Building Warrants	none
Trinity PS	August 2018	£18k	Building Warrants	Loss of playground equal to size of new build.
Stockbridge PS	August 2018	£14k	Building Warrants	Loss of playground equal to size of new build.
Currie PS	August 2018	£31k	Building Warrants	Loss of playground equal to size of new build.
Davidson's Mains PS	August 2018	£71k	Building Warrants	Small loss of overall playground space
Queensferry PS	August 2019	£40k	Building Warrants	Loss of playground equal to size of new build.
Granton PS	August 2018	£17k	Building Warrants	Loss of playground equal to size of new build.
Broomhills Primary School	2020	£383k	Planning and Building Warrants	New school - n/a
South Edinburgh	2020	£409k	Planning and Building Warrants	New school - n/a
New Victoria Primary School	2020	£285k (net of current running costs)	Planning and Building Warrants	New school - n/a
Victoria; Newcraighall; Cramond; James Gillespies; Clermiston primary schools. Provision of temporary capacity.	2018	£103k	Building Warrants	Small loss of overall playground space on temporary basis.

## Item no 5.11

### QUESTION NO 11

**By Councillor Jim Campbell for  
answer by the Lord Provost at a  
meeting of the Council on 15 March  
2018**

**Question** (1) If Edinburgh 2050 is to encourage the widest conversation amongst all strata of our City, building on the experience of other Cities and our own earlier Radical Enlightenment, can the Lord Provost indicate the progress in raising the £350,000 that is estimated to be needed, in cash or kind, to launch this conversation?

**Answer** (1) The City Vision Steering Group, supported by partner organisations including the Council, is taking forward engagement approaches with key stakeholders including young people and major employers in the city. Plans to increase engagement with representative community organisations are being developed. A number of organisations have expressed interest in supporting the City Vision activity. The date for the dinners was changed and these will take place later this month. I shall update on progress thereafter.

**Question** (2) What tangible offers of support did he and the Chief Executive receive following the January dinners involving key leaders of the Edinburgh business community?

**Answer** (2) See answer (1) above.

## Item no 5.12

### QUESTION NO 12

**By Councillor Bruce for answer by the Leader of the Council at a meeting of the Council on 15 March 2018**

With Edinburgh's population expected to increase by over 100,000 over the next 20 years...

**Question** (1) Has the Administration has been in contact with utility companies to work out a strategy to cope with the expected rise in utilities including gas, electrics, water, network cabling and sewage to name a few?

**Answer** (1) The latest Scottish Government population projections predict an increase in population of 78,400 in Edinburgh over the next twenty years.

The Council's annual housing land audit and delivery programme (HLADP) estimates delivery of new homes for all planned housing sites on a year by year basis. The latest HLADP demonstrates that there is sufficient land for 31,300 new homes across the City and these are currently being delivered at an average of 2,300 homes per year. The programme of delivery is used by the Local Development Plan Action Programme to identify infrastructure actions to address the impact of new developments. This information is shared with utility companies and they are asked to identify actions in response to the programme.

**Question** (2) Is there a need to identify a new water treatment works to cope with extra demand for water and if so where would it most likely be located?

**Answer** (2) Scottish Water are currently modelling future infrastructure requirements. They are not planning for new water treatment works.

However they have commissioned independent research into the operation of the Seafield Waste Water Treatment Plant including possible future investment. The report on this is due on 23 March 2018. It is likely that a report will be submitted to the Transport and Environment to update members on the implications.

**Question** (3) How will the administration aim to deal with the expected rise in all aspects of waste due to increased housing?

**Answer** (3) As set out in the Action Programme report to Finance Committee on 23 January 2018 the Council has identified the indicative annual revenue funding implications for completed infrastructure at year ten. For waste management this is set out below.

Waste water sewer infrastructure is the responsibility of Scottish Water. The costs of maintaining surface water drainage infrastructure is part of road maintenance by the Council. The above report identified estimation of annual revenue funding implications for new streets and roads in new development as being the subject of further work. It is expected that this will be estimated in the financial assessment of the next LDP Action Programme.

Refuse collection per annum: £1.272 million

Refuse disposal per annum: £2.038 million

Street cleaning per annum: £0.181 million

The Council's long term financial plan assumes that a proportion of Council tax revenue would be used to offset the revenue and loan charge impact.

**Question** (4) Of the £200M shortfall in required infrastructure investment identified in the LDP Action Plan reported to the Finance and Resources Committee 23 Jan 2018, what is the shortfall in the South West Locality?

**Answer** (4) As set out in the report to Finance Committee on 23 January 2018 the Council has modelled the impact of the Local Development Plan Action Programme on the Council's budgets. This has been carried out through a financial model.

It is not possible to identify how much of this shortfall could fall within any particular locality.

## Item no 5.13

### QUESTION NO 13

**By Councillor Bruce for answer by the Convener of the Transport and Environment Committee at a meeting of the Council on 15 March 2018**

I have been informed that as road surfaces age to beyond 25 to 30 years the bitumen becomes brittle and the road requires to be resurfaced. At this stage of failure, no amount of patching will solve the pothole issue. Preventative road resurfacing is required to be carried to renew such roads and extend the serviceable life.

**Question** (1) What is the best estimate of the kilometres of Edinburgh road surfaces that have reached the end of their serviceable life?

**Answer** (1) This Council's approach is to prioritise road surface repair/replacement based on the Road Condition Index score. This score is based on an annual survey of road conditions across all of Scotland's local authorities and identifies the percentage of roads in need of maintenance.

The current RCI for Edinburgh's roads is 36.4%.

**Question** (2) What is the cost to resurface a kilometre of an average Edinburgh road?

**Answer** (2) The cost to resurface a road differs significant depending on the treatment method and therefore an average cannot be provided.

**Question** (3) What are the number of injury claims due to uneven surfaces per ward, per month, for the last 5 years?



**Answer** (3) The table below shows the number of injury claims per ward for the last five years

Ward	Ward Name	2013	2014	2015	2016	2017	Ward Total
1	Almond	1	2	1	2	0	6
2	Pentland Hills	1	0	0	1	2	4
3	Drum Brae / Gyle	1	2	2	0	0	5
4	Forth	2	2	1	1	3	9
5	Inverleith	3	4	1	2	1	11
6	Costorphine/Murrayf'd	2	2	1	0	0	5
7	Sighthill/Gorgie	0	3	4	3	4	14
8	Colinton/Fairmilehead	2	2	0	0	1	5
9	Fountainbridge/C'hart	2	1	3	2	1	10
10	Meadows/Morningside	2	1	2	4	3	12
11	City Centre	19	18	12	22	16	97
12	Leith Walk	6	2	2	2	3	15
13	Leith	2	3	0	2	0	7
14	Craigentiny/Dudd'n	2	1	1	1	1	6
15	Southside/Newington	2	3	0	4	3	12
16	Liberton/Gilmerton	2	2	2	0	0	6
17	Portobello/Craigmillar	3	1	1	0	3	8
	<b>Year Total</b>	<b>52</b>	<b>49</b>	<b>33</b>	<b>46</b>	<b>41</b>	<b>247</b>

**Question** (4) What are the number of claims for vehicle damage due to potholes/uneven surfaces per ward, per month, for the last 5 years?

**Answer** (4) The table below shows the number of claims for vehicle damage over the last five years.

<b>Ward</b>	<b>Ward Name</b>	<b>2013</b>	<b>2014</b>	<b>2015</b>	<b>2016</b>	<b>2017</b>	<b>Ward Total</b>
1	Almond	13	9	22	43	10	<b>97</b>
2	Pentland Hills	33	8	14	33	17	<b>105</b>
3	Drum Brae / Gyle	67	13	4	24	12	<b>120</b>
4	Forth	8	6	13	14	7	<b>48</b>
5	Inverleith	10	10	7	32	6	<b>65</b>
6	Costorphine/Murrayf'd	20	8	8	30	3	<b>69</b>
7	Sighthill/Gorgie	20	17	37	22	14	<b>110</b>
8	Colinton/Fairmilehead	5	10	6	14	0	<b>35</b>
9	Fountainbridge/C'hart	13	14	21	26	8	<b>82</b>
10	Meadows/Morningside	22	20	24	40	14	<b>120</b>
11	City Centre	38	31	45	39	11	<b>164</b>
12	Leith Walk	28	8	10	30	2	<b>78</b>
13	Leith	8	4	11	36	0	<b>59</b>
14	Craigtinny/Dudd'n	7	4	8	18	5	<b>42</b>
15	Southside/Newington	11	8	14	30	18	<b>81</b>
16	Liberton/Gilmerton	9	9	22	23	6	<b>69</b>
17	Portobello/Craigmillar	5	6	4	12	3	<b>30</b>
	<b>Year Total</b>	<b>317</b>	<b>185</b>	<b>270</b>	<b>466</b>	<b>136</b>	<b>1374</b>

**Question**            (5) What are the number of roads which have been resurfaced through capital revenue per ward, for the last 5 years?

Ward	Ward Name	2012/13	2013/14	2014/15	2015/16	2016/17	Ward Total
1	Almond	2	14	1	2	1	20
2	Pentland Hills	1	7	6	1	7	22
3	Drum Brae / Gyle	5	7	2	5	0	19
4	Forth	1	8	0	1	0	10
5	Inverleith	2	11	4	0	1	18
6	Costorphine/Murrayf'd	2	2	3	2	14	23
7	Sighthill/Gorgie	5	8	2	2	0	17
8	Colinton/Fairmilehead	8	10	2	2	0	22
9	Fountainbridge/C'hart	2	1	7	0	2	12
10	Meadows/Morningside	1	5	2	4	2	14
11	City Centre	0	2	3	4	3	12
12	Leith Walk	0	1	1	0	1	3
13	Leith	0	1	0	0	0	1
14	Craigentenny/Dudd'n	6	0	1	1	1	9
15	Southside/Newington	4	1	2	5	1	13
16	Liberton/Gilmerton	2	7	11	2	0	22
17	Portobello/Craigmillar	3	4	2	1	0	10
	<b>Year Total</b>	<b>44</b>	<b>89</b>	<b>49</b>	<b>32</b>	<b>33</b>	<b>247</b>

**Answer** (5) The table below shows the number of roads resurfaced using capital funding in the last five years. There were no roads resurfaced using revenue funding.

## Item no 5.14

### QUESTION NO 14

**By Councillor Young for answer by the Convener of the Transport and Environment Committee at a meeting of the Council on 15 March 2018**

To ask the Convener for the details of all un-adopted housing developments in Kirkliston and South Queensferry.

Specifically:

- Question** (1) The name or address of each development?
- Answer** (1) This information is provided in the table below.
- Question** (2) Which of these are still under 2 years since the development completed, and therefore not yet started the road adoption process?
- Answer** (2) The status of each site is described in the notes column of the table provided. This includes all of the live adoption sites within the requested area.
- Question** (3) Of the others which are currently going through road adoption, please provide the following:
- The approx. date the process started
  - The current status (i.e. How close to adoption it is)
- Answer** (3) The date of the application in the table indicates the date this process started and the current status is provided in expected timescale column.
- Question** (4) Of those identified in (3), where the adoption process has been going for a year or longer, please provide the following:
- The outstanding issues
  - The expected timescales for resolution
- Answer** (4) General information on each is provided in the table however more detailed information is available from the Locality team if required

<b>RCC Reference</b>	<b>Site Name</b>	<b>Address</b>	<b>Developer</b>	<b>Date of Application</b>	<b>Note</b>	<b>Expected Timescale</b>
ED/17/0007	Bankhead Road, Dalmeny, Sth Queensferry	Bankhead Road, Dalmeny, Sth Queensferry	Westpoint Homes Ltd	30/01/2017	New site under construction	N/A
ED/13/0035	Scotstoun Ave (ex Agilent) DW Phase 1	Scotstoun Avenue, Sth Queensferry	David Wilson Homes	04/11/2013	Letter to be issued to reduce Bond to 10% - This site will soon enter the 1 year defect liability period.	One year defect liability period to commence Spring 2018
ED/13/0040	Scotstoun Ave (ex Agilent) DW Phase 2	Scotstoun Avenue, Sth Queensferry	David Wilson Homes	04/11/2013	Letter to be issued for reduction to 30% - Site works still ongoing	Site works almost complete - dates TBA
ED/13/0029	Scotstoun Ave (ex Agilent) Phase A, Infrastructure	Scotstoun Avenue, Sth Queensferry	David Wilson Homes	26/09/2013	Bond Reduced to 50%, Still under construction	Site works ongoing - dates TBA
ED/13/0033	Scotstoun Ave (ex Agilent) Cala Phase 1	Scotstoun Avenue, Sth Queensferry	David Wilson Homes	04/11/2013	Bond Reduced to 50%, Still under construction	Site works ongoing - dates TBA
ED/15/0017	Ferrymuir - Bellway	Ferrymuir, South Queensferry	Bellway Homes	24/07/2015	New site under construction	Site works ongoing - dates TBA
ED/09/0014	North Kirkliston - Area J (Longacre)	Burnshot Road, Kirkliston	Cala Homes Ltd	11/11/2009	Road not adopted yet due to outstanding snagging items on Burnshot Road. Cala Homes to carry out investigation and repairs	Awaiting response from Cala Homes
ED/13/0037	North Kirkliston Area K (Ashton Gardens)	Housefield Drive, Kirkliston	Walker Group	29/11/2013	Contractor seeking meeting with Locality for final inspection	Final inspection meeting due in March 2018
ED/12/0014	North Kirkliston-Area Y (Elms)	Housefield Drive, Kirkliston	Barratt East Scotland	28/09/2012	Site complete adoption to be progressed	Adoption certificate to be prepared Spring 2018

ED/15/0031	North Kirkliston Area G (Ellwood)	Housefield Drive, Kirkliston	Walker Group	21/10/2015	Site still under construction	N/A
ED/10/0010	North Kirkliston-Areas C & D (Beeches)	Eliston Road	Barrett East Scotland	22/04/2010	Bond reduced to zero, letter sent Feb 2018, adoption to be progressed	Adoption certificate to be prepared Spring 2018
ED/10/0011	North Kirkliston-Area B (The Willows)	Kirkland Park Street	David Wilson Homes	22/04/2010	Bond reduced to zero, letter sent Feb 2018, adoption to be progressed	Adoption certificate to be prepared Spring 2018
ED/10/0022	North Kirkliston-Area A	Kirkland Park Street	Barratt East Scotland	09/11/2010	Letter to be issued for reduction to 20%	Snagging works still to be inspected - One year defect liability period should commence following inspection in Spring 2018
ED/10/0012	North Kirkliston-Area X	Kirkland Park Street	Home Group	22/04/2010	Site complete adoption to be progressed	Adoption certificate to be prepared Spring 2018
ED/04/0012	Drambuie	Stirling Road, Kirkliston	Miller Homes	2004	Not adopted, Miller Homes never completed snagging list	No contact from developer regarding adoption.
ED/08/0001	The Granary	Path Brae, Kirkliston	Cruden Homes	06/12/2007	No contact from the developer yet to start the final adoption process	Expected to start defect liability period in 2018

## Item no 5.15

### QUESTION NO 15

**By Councillor Young for answer by the Convener of the Finance and Resources Committee at a meeting of the Council on 15 March 2018**

**Question** (1) How many individual compensation claims were received in 2017 as a result of alleged personal injury or vehicle damage and because of the condition of Council adopted roads and pavements?

**Answer** (1) There were 267 individual compensation claims in 2017. A breakdown by ward is below.

Ward 1	14
Ward 2	23
Ward 3	15
Ward 4	13
Ward 5	9
Ward 6	10
Ward 7	26
Ward 8	1
Ward 8	2
Ward 9	12
Ward10	19
Ward11	57
Ward12	9
Ward13	1
Ward14	10
Ward15	29
Ward16	8
Ward17	9

**Question** (2) How many of these claims resulted in a financial payout by Edinburgh Council?

**Answer** (2) There were 49 claims that resulted in a financial pay-out. A breakdown by ward is below.

Ward 1	1
Ward 2	13
Ward 3	1
Ward 4	1
Ward 5	2
Ward 6	1
Ward 7	8
Ward 8	1
Ward 8	0
Ward 9	5
Ward10	6
Ward11	2
Ward12	1
Ward13	0
Ward14	0
Ward15	5
Ward16	1
Ward17	1



**Question** (3) What was the total cost of compensation payments for successful claims in 2017?

**Answer** (3) The total cost of compensation payments was £24,050. A breakdown by ward is below.

Ward 1	£108
Ward 2	£7,495
Ward 3	£80
Ward 4	£70
Ward 5	£410
Ward 6	£117
Ward 7	£935
Ward 8	£804
Ward 8	£0
Ward 9	£1,616
Ward10	£963
Ward11	£1,493
Ward12	£202
Ward13	£0
Ward14	£0
Ward15	£5,935
Ward16	£75
Ward17	£3,748

**NOTE** If the information is available, please provide this information by ward or locality

## Item no 5.16

### QUESTION NO 16

**By Councillor Young for answer by the Convener of the Transport and Environment Committee at a meeting of the Council on 15 March 2018**

At the Council meeting of 24 August 2017, the Council passed a motion on Kirkliston congestion which agreed “to continue dialogue with Lothian Buses around introducing a direct service to the City Centre”. As a full 6 months have now passed:

**Question** (1) How many letters or emails have the Convener and senior officials sent to Lothian Buses [between 24 August 2017 and 05 March 2018](#) regarding the introduction of a service between Kirkliston and Edinburgh City Centre? Please provide date, format (email/letter), and who it was sent from, and if not commercially sensitive, a copy of the correspondence.

**Answer** (1) Kirkliston is well served by a number of bus services, including First Scotland East's Service 38/38A. This service provides a direct service to the city centre, seven days a week, with a 10 minute frequency at peak times. Other services provide connections to the Gyle, Edinburgh Park, Heriot Watt and West Lothian. Lothian Bus service provision is based on commercial decisions taken by the company themselves. Although the City of Edinburgh Council own some 91% of Lothian Buses PLC (the remaining being owned by East Lothian, Midlothian, and West Lothian Councils), the Transport Act 1985 prevents the Council from interfering in its operations. Lothian Buses makes its own decisions for the company on routes, fares, and service frequencies. The Council has no power to direct Lothian Buses or any other commercial operator to provide buses in a particular area, or follow a particular route.

**Question** (2) How many meetings have the Convener and senior officials had with Lothian Buses [between 24 August 2017 and 05 March 2018](#) and, of these, how many have included a discussion regarding the introduction of a service between Kirkliston and Edinburgh City Centre? Please provide date and who was in attendance

**Answer**

- (2) I meet with Lothian Bus twice per month and officers meet with representatives of Lothian Bus, across a wide range of matters, on a regular basis. Given the commercial confidentiality surrounding discussion on operational issues, it would be inappropriate to provide the detailed information requested.

## Item no 5.17

### QUESTION NO 17

**By Councillor Mary Campbell for answer by the Convener of the Education, Children and Families Committee at a meeting of the Council on 15 March 2018**

- Question** (1) What plans are there to engage with the Scottish Government over the timing and financial support for wave 4 schools, including Trinity, Castlebrae and Liberton High Schools?
- Answer** (1) Senior Officers in Communities and Families make regular contact with officials in the Scottish Government and the Scottish Futures Trust to ensure the Council has the latest information about future funding opportunities.
- Question** (2) What are the plans and timelines for developing detailed briefs for wave 4 schools to take advantage of potential funding?
- Answer** (2) Officers will bring a report to the May Committee meeting on plans for Wave 4 funding.
- Question** (3) What options are being looked at to secure the full funding needed for wave 4 schools and when will those options be reported to elected members?
- Answer** (3) The capital funding for any new school project is likely to be a combination of some or all of Council capital, developer's contributions or government funding. The latest capital funding situation is as approved by Council at its meeting on 22 February 2018 and any changes to this would require to be reported to a future meeting of the Finance and Resources Committee or a meeting of the full Council. There are also revenue implications for any new build or major refurbishment projects and these will require to be factored into any business cases developed for Wave 4 projects with appropriate revenue budgets established before the projects can be delivered.

## Item no 5.18

### QUESTION NO 18

**By Councillor Booth for answer by the Convener of the Transport and Environment Committee at a meeting of the Council on 15 March 2018**

#### **Question**

Please will the Convener provide a list of all current and pipeline projects in the cycling capital infrastructure programme with

- a) original planned completion date and
- b) current planned completion date?

#### **Answer**

The table below provides the information requested for the current cycling capital infrastructure programme.

## Cycling Capital Infrastructure Programme - March 2018

### NOTES

1. Schemes with 'no current delivery date' are ones which we had been intending to deliver in the short term, prior to winning Community Links Plus (CL+). The programme is currently being revised as a result of the addition of CL+ and will be updated once timing and resources are confirmed.

Project Type	PROJECT NAME	BRIEF DESCRIPTION	CURRENT STATUS			Date Project Initiated	Original Anticipated Delivery Date	Current Anticipated Delivery Date
			IN PROGRESS	START-UP/RE-START PHASE	AWAITING RESOURCE / ON HOLD			
cyc + walk	City-wide route signs/ map boards/ courtesy signs	Installation of Courtesy Signage and wayfinding boards.				2016	2017 and ongoing	Ongoing
cyc + walk	North Edinburgh Path Network	Drainage and surface improvements.				2016	Winter 2017/2018	March to June 2018
cyc + walk	Innocent Path - tunnel lighting upgrade	Installation of new lights within tunnel.				2016	2017	2018/19
cyc + walk	Lower Granton Road	New / widened shared use path. From Trinity Road to Granton Square.				2016	2017/18	Autumn 2018
cyc + walk	QuietRoute 6 (2 schemes) 1. Grange Road 2. Meadows - Castle Terrace	Street improvements and new crossings.				2016	2017/18	1. Grange Rd scheme - Autumn/Winter 2018 2. Meadows – Castle Terrace scheme: No current delivery date (see Note 1 above)

<b>cyc + walk</b>	Waterfront Promenade (West Shore Road to Granton Harbour)	New off-road seafront shared use path.				2016	2017/18	Winter 2018/19
<b>cyc + walk</b>	Barnton Avenue West Golf Course link	Lighting of small path at end of golf course path.				2017	2017	2018/19
<b>cyc + walk</b>	West Approach Road (part of Roseburn to Union Canal)	New off-road path.				2015	Funding dependant, no original fixed date for construction	Preliminary design progressing, no current date for construction
<b>cyc + walk</b>	QuietRoute 5 Holyrood Park	Improved paths and new crossings.				2016	2017/18	Preliminary design underway, construction winter 2018/19
<b>cyc + walk</b>	Newcraighall/Queen Margaret University Lighting Project	Improved lighting on Newcraighall Park				2017	2017/18	2018/19
<b>cyc + walk</b>	Meadows - Union Canal (Innocent Path to Canal Phase 2b)	Segregated cycle lanes and toucan crossings on Home St and Brougham Place. Footway and cycle improvements on Lochrin Place and Tarvit Street.				2013	2016/17	2019/20
<b>cyc + walk</b>	West Edinburgh Active Travel Network (WEATN)	Segregated cycle lanes, crossings, street improvements and new bridge over Fife Railway.				2017	2019/22	Procurement of design consultants underway, phased delivery: 2019-2021
<b>cyc + walk</b>	Meadows to George Street	Segregated cycle lanes and street improvements.				2017	2020/22	Procurement of design consultants underway, phased delivery: 2020-2022

Project Type	PROJECT NAME	BRIEF DESCRIPTION	CURRENT STATUS			Date Project Initiated	Original Anticipated Delivery Date	Current Anticipated Delivery Date
			IN PROGRESS	START-UP/RE-START PHASE	AWAITING RESOURCE/ON HOLD			
cyc + walk	Little France Park	Path through new parkland.				2016	2017/18	Spring 2018
cyc	City-wide public bike parking	Cycle rack installations.				ongoing	ongoing	On hold pending appointment of replacement Active Travel Technician - expected within 3 months
cyc	Various locations - tram route - AECOM to confirm cost	Cycle safety improvements along the tram route				2016	2017/18	Phase 1 – delivered Phase 2 - March 2018 Phase 3 - Autumn 2018
cyc	QuietRoute 8 (6 schemes) 1. Bankhead Avenue to Bankhead Drive 2. South Gyle Access 3. Russell Road 4. Balgreen Road Crossing 5. Roseburn Park 6. Saughton Park to QuietRoute 8	Street improvements and new crossings.				2016	2017/18	1&2. Bankhead Avenue to Bankhead Drive & South Gyle Access - to be delivered as part of the wider Community Links Plus West Edinburgh Active Travel Network. 3. Russell Road – on hold until CCWEL is delivered. 4. Balgreen Road Crossing – Autumn 2018 5. Roseburn Park – March -April 2018 6. Saughton Park to QuietRoute 8 – no current delivery date (see Note 1 above)
cyc	QuietRoute 60 Davidsons Mains Park	Path and lighting improvements.				2016	2017/18	By Autumn 2018



<b>cyc</b>	Craiglockhart Road North - link to Canal	Path widening and surfacing.				2015	n/a dependant on Scottish Water agreement	By Summer 2018
<b>cyc</b>	QuietRoute 20 (Craigleith to Leith Walk)	Quiet Street improvements and new crossings.				2016	2017/18	No current delivery date (see Note 1 above)
<b>cyc</b>	QuietRoute 61 (3 schemes) 1. Hay Avenue & Niddrie House Avenue 2. Gilmerton Road 3. Old Dalkeith Road	Street improvements and new crossings.				2016	2017/18	1&2. Hay Avenue, Niddrie House Avenue & Gilmerton Road: no current delivery date (see Note 1 above) 3. Old Dalkeith Road: Winter 2018
<b>cyc</b>	City Centre West to East Cycle Link	Segregated cycle lanes, crossings and street improvements.				2015	2017/19	Initial works (dependant on more minor TRO issues) - 2018/19 Main works (all sections) - 2019/20, potentially into 2020/21
<b>cyc</b>	QuietRoute 30 Holyrood Park to Ratcliffe Terrace	Street improvements and new crossings.				2016	2017/18	No current delivery date (see Note 1 above)
<b>cyc</b>	Marchmont Road - Kings Buildings	Advisory cycle lanes. New gyratory at Oswald Road/Kilgraston Road. Blackford Avenue/Main Street junction upgrade.				2014	2015/16	No current delivery date (see Note 1 above)
<b>cyc</b>	Forthquarter - Silverknowes Promenade	Path widening and crossing, West Granton Road, West Shore Road, Forthquarter Park with Silverknowes Promenade.				2014	2015/16	No current delivery date (see Note 1 above)

Project Type	PROJECT NAME	BRIEF DESCRIPTION	CURRENT STATUS			Date Project Initiated	Original Anticipated Delivery Date	Current Anticipated Delivery Date
			IN PROGRESS	START-UP/RE-START PHASE	AWAITING RESOURCE/ON HOLD			
cyc	Leith - Portobello (Water of Leith to Links Place)	On carriageway cycle provision.				2015/16	2017/18	No current delivery date (see Note 1 above)
cyc	Fountainbridge/Dundee Street	On-carriageway cycle provision. Segregated link between Telfer Subway and Union Canal.				2015	2017/18	No current delivery date (see Note 1 above)
cyc	Residential cycle parking	On-street secure cycle parking application, consultation and TRO works through consultant.				2016	2017/20	2018/20
cyc	Cultins Road shared footway	Begin discussions with land owners to agree sale or construction of adoptable path on verge to west of Cultins Road.				2015	2017/18	No current delivery date (see Note 1 above)
cyc	Sighthill Crossing link	Changing junctions to prioritise cycle north south movements to and from the Union Canal.				2017	2018/19	Now included in West Edinburgh Active Travel Network
cyc	Crewe Road South/ Orchard Brae	On carriageway cycle provision.				2015	2017/18	No current delivery date (see Note 1 above)

<b>cyc</b>	St. Leonard's - Canongate/Holyrood Drive	On carriageway cycle provision, Calton Road, crossings, path improvements at Viewcraigs.				2016	2018/19	Preliminary design underway, no current date for construction
<b>cyc</b>	One-way street exemptions (Phase 1)	Signs, markings, traffic management.				2017	2018/21	No current delivery date (see Note 1 above)
<b>cyc</b>	BioQuarter to Dalkeith Rd and Mayfield	On carriageway cycle provision.				2016	Funding dependant, no original fixed date for construction	Feasibility report completed. No current delivery date (See Note 1 above - also depends on partners' resources (Scottish Enterprise, NHS, Edinburgh University))
<b>cyc</b>	A8 Gyle - Newbridge (QuietRoute 9)	Path widening between Ingliston Road and Eastfield Road and design of new junctions at Ingliston Road and Gogarstone Road.				2017	2018/19	2018/19
<b>cyc</b>	QuietRoute 9 1. Balgreen Road 2. Saughtonhall Drive 3. Pinkhill and Ladiebridge Paths 4. South Gyle Gardens to Edinburgh Park 5. Link to Edinburgh Zoo	Crossings, link paths and street improvements				2016	2017/18	1-2,5. Balgreen Road, Saughtonhall Drive & Edinburgh Zoo link: Preliminary design underway, no current date for construction due (see note 1) 3. Pinkhill and Ladiebridge Paths: Dependant on land ownership resolution 4. South Gyle Gardens to Edinburgh Park: to be delivered as part of the wider Community Links Plus West Edinburgh Active Travel Network

Project Type	PROJECT NAME	BRIEF DESCRIPTION	CURRENT STATUS			Date Project Initiated	Original Anticipated Delivery Date	Current Anticipated Delivery Date
			IN PROGRESS	START-UP/RE-START PHASE	AWAITING RESOURCE/ON HOLD			
cyc	Roseburn Path - Union Canal	New off-road path, bridges and park improvements.				2015	Funding dependant, no original fixed date for construction	Preparation for Planning Application underway, no current date for construction
cyc	Pennywell Road	Pennywell Road segregation and links to North Edinburgh Path Network.				2017	Project dependant on CEC housing development programme	Preliminary design underway, no current date for construction

## Item no 5.19

### QUESTION NO 19

**By Councillor Staniforth for answer by the Convener of the Finance and Resources Committee at a meeting of the Council on 15 March 2018**

#### Question

How much has been or is planned to be spent by way of participatory budgeting in a) 2017-18 and b) 2018-19, both in absolute terms and as a percentage of the net revenue or capital budgets??

#### Answer

In 2017/18, the following participatory budgeting projects were, or are being, undertaken:

- £eith Decides – allocation of Community Grants Fund;
- South Central Neighbourhood Partnership – Neighbourhood Environment Programme;
- Your Choice: Youth Projects (Activity Agreements), led by Economic Development service;
- Local Employability Initiative (including Scottish Government match funding), led by Economic Development service; and
- Choose Youth Work, led by Communities and Families service.

Across these five projects, total funding of £0.232m has been allocated, equating to 0.03% of the Council's service revenue budget. The Council will build on these and previous years' foundations in moving towards the aim of allocating at least 1% of its overall budget by means of participatory budgeting by 2020/21.

Council-wide plans for 2018/19 are being finalised. The outcome of the 2018/19 Choose Youth Work initiative will, however, be reported to the Education, Children and Families Committee on 22 May 2018, with over fifty applications received and on-line voting on these projects, allocating total available funding of £0.166m, currently in progress.

A steering group has additionally been established to distribute an element of Tynecastle High School's 2018/19 Pupil Equity Fund allocation of £0.077m through participatory budgeting principles, with awareness-raising sessions already undertaken and a range of proposals under development to be voted upon in June.

Following confirmation of additional localities investment of £0.250m as part of the approved 2018/19 revenue budget, opportunities are being examined to allocate this funding through participatory budgeting approaches. The Council is also examining, with Police Scotland colleagues, the potential introduction of participatory budgeting projects as part of a refreshed Service Level Agreement. Identification of other budgets to be allocated using a participatory budgeting approach is an on-going process.

In line with the Council's commitment to enhance participatory democracy and empower communities, a participatory budgeting champions programme has been established to raise awareness and grow community capacity across all areas of Council activity. This awareness will facilitate expansion of use of participatory budgeting across commissioned and other mainstreamed services.

### QUESTION NO 20

**By Councillor Whyte for answer by the Convener of the Housing and Economy Committee at a meeting of the Council on 15 March 2018**

#### Question

What progress has been made in implementing the Edinburgh related actions amongst the recommendations of the Scottish Government's Homelessness and Rough Sleeping Action Group as published on 28 November 2017?

#### Answer

**Link to full paper:**

<https://beta.gov.scot/publications/homelessness-rough-sleeping-recommendations/>

#### **Summary of key recommendations**

The group have considered a wide range of potential responses for this Winter, but have prioritised actions in the following areas on the basis of the ability to implement at speed; and the potential impact to minimise rough sleeping this Winter:

- 1. Increase capacity in temporary and emergency accommodation in Edinburgh by expanding the winter shelter capacity from 60 to 75 and deliver an additional 12 rapid-access beds (for the winter only, and only accessed via street outreach workers) – total additional cost £142,000 - £25,000 covered by Social Bite**

The additional capacity in the care shelters was increased first to 60 on 1 December 2017 and then to 75 on 4 December. Since the increase there have been no evenings where the shelters have been unable to accommodate anyone due to capacity.

The additional rapid access beds have been in place since 11 December and have operated at capacity most nights, feedback from service users has been positive and it has allowed us to engage with 46 service users, who otherwise have not accessed statutory services. To date 26 service

users have moved to positive destinations, due to the additional support provided by this service. Based on this success the Scottish Government have agreed to fund the pilot for a further 3 months.

The original pilot was due to conclude on 9 March 2018. Officers are now developing a full review document of this pilot highlighting the successes and learning. This will be available in early April.

**2. Increase outreach capacity in Edinburgh, Glasgow and Aberdeen and further explore any need for additional capacity in Dundee – total additional cost £106,000 - £11,000 covered by Simon Community and £15,000 covered by Govan Law Centre.**

Street based outreach workers now work each evening, prior to the winter period they patrolled 4 nights per week. This has been beneficial in identifying people who continued to rough sleep, despite the increase in capacity in the shelters, who have then accessed the rapid access accommodation.

**3. Maximise use of Nightstop<sup>1</sup> in Edinburgh and undertake discussion with statutory sector in Glasgow to agree how we implement Nightstop there by January 2018**

The Nightstop service has been in force since 1 November 2017. To date six young people (for a total of 143 bed nights) have been accommodated. Two are currently in the service. The other four have either returned home, accessed a settled tenancy, or accessed supported accommodation.

**4. Maximise effectiveness of existing and additional outreach capacity by boosting multi-agency partnership working; adopting 'by name lists' approach and empowering frontline workers through direct access to services and dedicated accommodation**

This workstream has been created and officers meet with third sector partners each week to consider cases of the most vulnerable people in the city. This is now well



established and working well in terms of providing support and accommodation. To date 134 of the most vulnerable people in the city, have accessed accommodation following the development of this service.

- 5. Making personal budgets and/or flexible emergency fund available for frontline staff to employ where maximum flexibility is required to meet an individual's immediate housing needs, establishing trust and a basis on which further support can be provided towards a long term, sustainable successful outcome. This would only be the final resort, employed for those whom all other outreach and intervention fails. This would be treated as a pilot and the evidence gathered would inform development of thinking on the 'Housing First' approach – total additional cost £50,000.**

This fund has been accessed directly by frontline outreach workers for 29 people over the winter period and has provided a flexible, creative and immediate solutions at the point of contact with homeless people. This has included allocating funds for the provision of accommodation, banks statements to access benefits, ID to allow people to access employment and transport costs.

- 6. At times of extreme weather, ensure flexible provision is available in Edinburgh, Glasgow, and Aberdeen for anyone who will not use winter night shelters, despite all efforts – total additional cost £15,000.**

Streetwork are working with the Bethany Care Van and Density Street Impact Team to provide extreme weather packs where required, this is in addition to the increase in street based outreach to ensure better coverage of the city.

### **Additional Information**

- During the period of extreme weather, the dedication of Council staff ensured that Homelessness Services' continued to operate a service from 1a Parliament Square from 0830 to 1700 on Wednesday 1 and Thursday 2 March and from 0830 to 1540 on Friday 3 March.

- During the same period, Streetwork's outreach team were out on each of these days targeting people on the streets in order to provide hot drinks and extreme weather packs.
- A rough sleeping count was conducted in August 2017 and identified, on that night, 55 rough sleepers. This is a snapshot of that one evening, but allowed the provision of support for those who wished to engage. Another rough sleeping count will take place on 14 March 2018.

<sup>1</sup> \*Details on Nightstop can be found here:

<http://www.rocktrust.org/nightstop/>

The Edinburgh Nightstop service aims to provide young people between the ages of 16 and 25 years with emergency accommodation for up to 2 weeks in the homes of approved volunteers (although this can be extended, depending on circumstances).

## Item no 5.21

### QUESTION NO 21

**By Councillor Rae for answer by the  
Convener of the Housing and  
Economy Committee at a meeting of  
the Council on 15 March 2018**

#### Question

In light of the petition by campaign group Living Rent to call on the City Council to introduce a Rent Pressure Zone for Edinburgh, what engagement has the convener or officers had with the Scottish Government over submission of an application from the City Council?

#### Answer

No petition has been presented to the City Council from Living Rent and as such no action has been taken because of it.

However, a report to Housing & Economy Committee on [18 January 2018](#) advised that Scottish Government has issued guidance to local authorities on the evidence required in support of an application for a rent pressure zone. I met with Kevin Stewart MSP, Minister for Local Government and Housing, on 20 February to discuss the guidance and Council officers and Scottish Government officials will meet shortly to discuss the guidance in more detail. Council officers will also work with COSLA, local authorities and Scottish Government to take forward a shared methodology for identifying rent pressure zones.

As Convener of Housing and Economy I will continue to engage proactively at all levels of Government and with campaign groups and other interested parties on this subject.

## Item no 5.22

### QUESTION NO 22

**By Councillor Rae for answer by the Convener of the Housing and Economy Committee at a meeting of the Council on 15 March 2018**

#### Question

For answer by the Convenor of Housing and Economy: in light of the Scottish Government target to provide 50,000 affordable homes by 2021, at least 70% of which must be socially-rented, what percentage of the 20,000 affordable homes planned in Edinburgh by the council and housing associations will be socially-rented?

#### Answer

The Scottish Government plans to deliver 50,000 affordable homes through its funded housing programmes. These include social and mid rent and low cost home ownership. 70% of this programme is for social rent.

If the Council relied solely on Government funded programmes this would mean, on a per capita basis, 5,000 affordable homes in Edinburgh over the next five years, 3,500 of which would be for social rent. The Council's objective is to deliver double that number of homes.

The Council's [Strategic Housing Investment Plan](#) identifies that over the next five years 6,000 affordable homes will be supported by Government funded programmes with at least 70% (4,100) of these being for social rent.

Homes require around £65,000 grant funding per property to make them viable to build at social rent levels. Ultimately the amount of social rented homes that can be delivered across the city is directly related to the level of grant funding made available.

## Item no 5.23

### QUESTION NO 23

**By Councillor Main for answer by the Convener of the Integration Joint Board at a meeting of the Council on 15 March 2018**

**Question** (1) How many adults who have mental health and substance misuse issues were on the waiting list for Adult Counselling Services and what is the expected waiting list time, each month over the last three years?

**Answer** (1) There are three specialist drug and alcohol counselling services operating in Edinburgh. These are Edinburgh and Lothians Council on Alcohol (ELCA), Crew and Simpson House.

The length of wait for a service is measured by a national target (HEAT A11) which is assessed on the percentage of people entering treatment within 3 weeks. Over the course of the last three years (January 2015- Dec 2017) performance has improved against this target, and the number of people waiting for a service at the end of each month has fallen significantly.

Detailed information is given in Appendix A.

In addition, NHS Lothian/Health and Social Care Partnership provide psychological therapy services. These services are designed to support people with a range of mental health problems, which may include people with substance use issues.

There is a national target for waiting times to access psychological therapies (HEAT A12). The target is for 90% of people to be seen within 18 weeks from point of referral.

Appendix B provides detail of the number of people waiting longer than 18 weeks for treatment.

**Question** (2) How many adults who have mental health and substance misuse issues, attended Adult Community Treatment Services annually over the last 3 years, broken down by locality?

**Answer**

- (2)** It has not been possible to collate this data in the given timescale. I will ensure that this information is forwarded to Councillor Main as soon as it is available.

## Appendix A – Drug and Alcohol Counselling services activity 2015-17

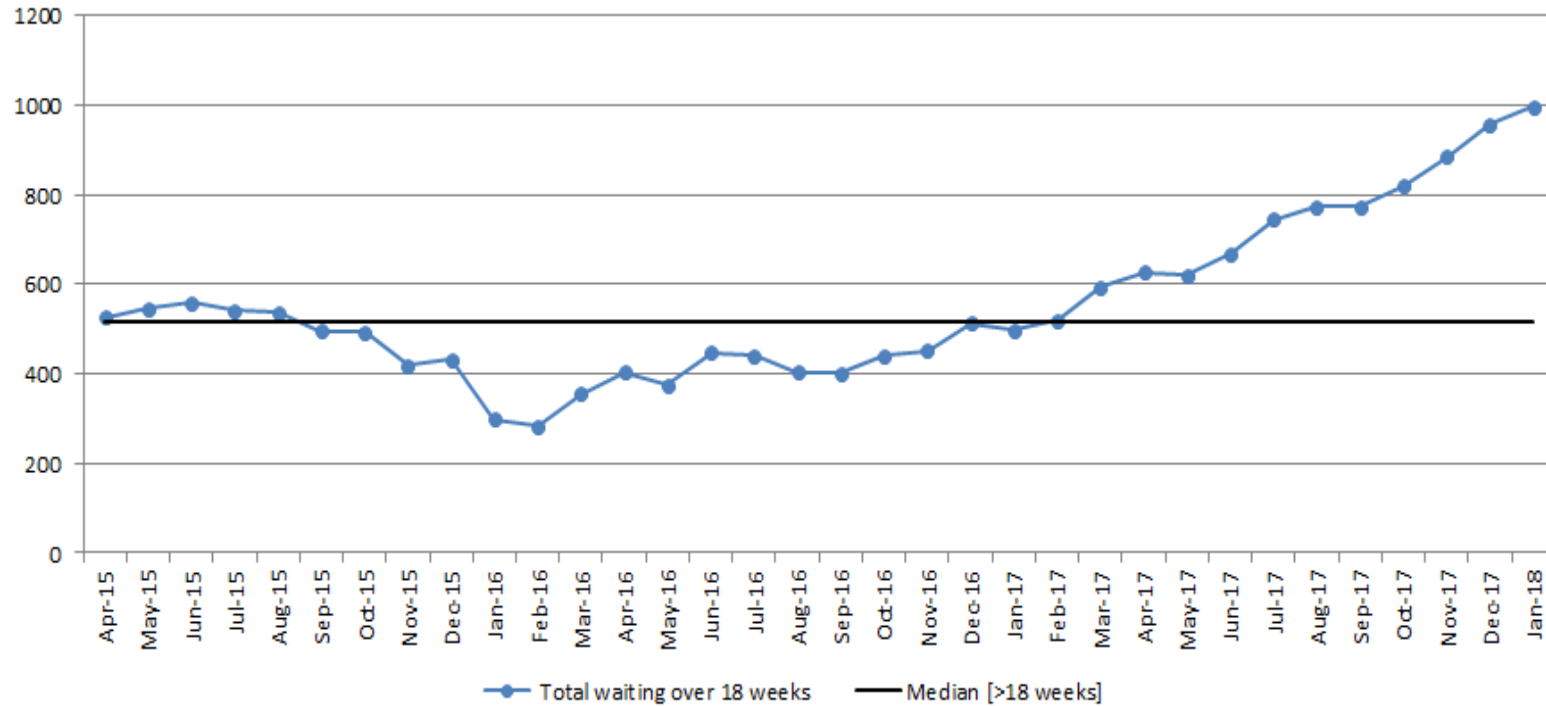
		Ongoing waits at end of month (number of people)	Number of people starting treatment	% accessing treatment under 3 weeks
<b>2015</b>	Jan	129	47	91%
	Feb	123	54	81%
	Mar	139	50	98%
	Apr	126	50	66%
	May	127	45	82%
	Jun	115	57	84%
	Jul	96	45	76%
	Aug	107	56	79%
	Sep	98	52	77%
	Oct	92	53	77%
	Nov	62	63	63%
	Dec	65	21	90%
<b>2016</b>	Jan	60	52	77%
	Feb	36	69	93%
	Mar	30	47	100%
	Apr	33	42	100%
	May	30	40	98%
	Jun	46	25	96%
	Jul	39	55	96%
	Aug	40	47	91%
	Sep	32	47	91%
	Oct	42	46	100%
	Nov	47	47	79%
	Dec	37	32	94%
<b>2017</b>	Jan	57	43	84%
	Feb	49	43	91%
	Mar	49	57	79%
	Apr	30	53	85%
	May	24	64	88%
	Jun	41	51	98%
	Jul	36	48	96%
	Aug	39	56	96%
	Sep	25	57	96%

	Oct	23	39	95%
	Nov	22	43	100%
	Dec	24	25	100%





Edinburgh Adult & Older Adults Services: Number of patients waiting over 18 weeks for Psychological Therapy



The data reported details the number of patients who have waited more than 18 weeks for a psychological therapy at month end from April 2015 to January 2018.

The data adults aged 18-65yrs and older adults, and only includes Edinburgh Services.

The substance misuse figures only detail patients who are waiting for a psychological therapy and do not relate to the separate 3 week substance misuse (A11) service target.

The data does not include any patients waiting to be seen by a Lothian wide Specialist service - (e.g. eating disorders, Trauma services).

## Item no 5.24

### QUESTION NO 24

**By Councillor Gloyer for answer by the Convener of the Culture and Communities Committee at a meeting of the Council on 15 March 2018**

During the redevelopment of Meadowbank Stadium, Edinburgh's elite track athletes have no suitable training facilities in the city. At the same time, they are obviously unable to take advantage of the city's Talented Athlete Scheme, which offered them free access to Meadowbank

- Question** (1) What was the amount allocated to the Talented Athlete Scheme in 2017-18?
- Answer** (1) The budget for 2017-18 was £20k.
- Question** (2) Will the Convener undertake to use that amount to support Edinburgh's athletes, until Meadowbank reopens, by providing travel grants to those who need to train outwith the city?
- Answer** (2) Any reduction on this budget would have an impact on the number of athletes that could benefit from this scheme. The Edinburgh Talented Athlete Support Scheme is open to athletes from all sports that have a national governing body recognised by **sportscotland** and provides free access to Edinburgh Leisure's gyms, swimming pools and running tracks for additional training outside of their regular club sessions. Elite track athletes in the ETASS can still access any of Edinburgh Leisure's gyms as well as track facilities at Saughton Sports Complex.

Given that alternative arrangements are available within the City and also as has previously been stated, additional costs would impact on the number of talented athletes able to benefit from this scheme, we would not recommend that funds be diverted in this way.

## Item no 5.25

### QUESTION NO 25

**By Councillor Booth for answer by the Vice-Convener of the Education, Children and Families Committee at a meeting of the Council on 15 March 2018**

**Question** (1) When will minutes of the last Gaelic Implementation Group be circulated to members?

**Answer** (1) Draft minutes of working groups are normally submitted for approval with the papers for the next meeting. However, I asked officers for the minutes of the last meeting to be circulated early to the Gaelic Implementation Group members as a draft and this was completed on the 12<sup>th</sup> March 2018.

I have also asked for a clear process and timescales for supporting future meetings to be agreed, and will update GIG members at the next meeting on Tuesday 27<sup>th</sup> March 2018.

**Question** (2) When will the Gaelic Implementation Group next meet?

**Answer** (2) The next Gaelic Implementation Group will meet on the 27 March 2018 with a view to discussing the GLP prior to its submission to the Corporate Policy and Strategy Committee on 15<sup>th</sup> May 2018. Papers for this meeting will be issued by the 20<sup>th</sup> March 2018.

In the meantime, we continue to engage with the Co-production group which is made up of GIG members to develop the GLP.

**Question** (3) How many full-time equivalent posts does the council have in Gaelic Development?

**Answer**

- (3)** We have one part time officer working three days a week on Gaelic Development. In addition, we also have a number of staff working across the council. These include policy staff within the strategy and Insight team. The Policy and Insight Senior Manager is responsible for the production of the Gaelic Language Plan.

I have asked officers for an updated and detailed list of all those officers from the relative service areas who will be responsible for overseeing the implementation of the GLP.

I have also asked officers to visit Glasgow Council to understand how they have supported their approach to the Gaelic Language.

## Item no 5.26

### QUESTION NO 26

**By Councillor Booth for answer by the Convener of the Transport and Environment Committee at a meeting of the Council on 15 March 2018**

**Question** (1) Is the Convener aware of a recent report from the Swedish Association of Local Authorities and Regions that, following a gender-balanced budgeting process, many Swedish cities, including Stockholm, now prioritise snow clearing from walkways and cycle paths first, especially those near bus stops and primary schools, followed by local roads, followed by highways?

**Answer** (1) I am familiar with this report and had asked officers to consider this approach in the review of our Winter Weather operations

**Question** (2) Has the council considered such an approach?

**Answer** (2) Not to date. The Council's current approach gives equal priority to Priority 1 cycle ways, pavements and roads, prioritising main routes for emergency vehicles, walking, cycling and public transport.

**Question** (3) What action does the council take to co-ordinate and support the efforts of communities and volunteers in snow-clearing and gritting?

**Answer** (3) Following a citywide consultation, the Council has recently piloted a 'Resilient Communities' project. Juniper Green and Ratho Community Councils participated and were provided with equipment, training and support to develop local community resilience plans. The pilot is currently being evaluated and the outcomes will feed in to the review of Winter Weather operations.

Following last week's severe weather, Communities and Families engaged with parents and staff through Head Teachers to arrange voluntary snow clearing community events at educational establishments.

---